

Assembly Instructions for P48UW *Utility Wagon*

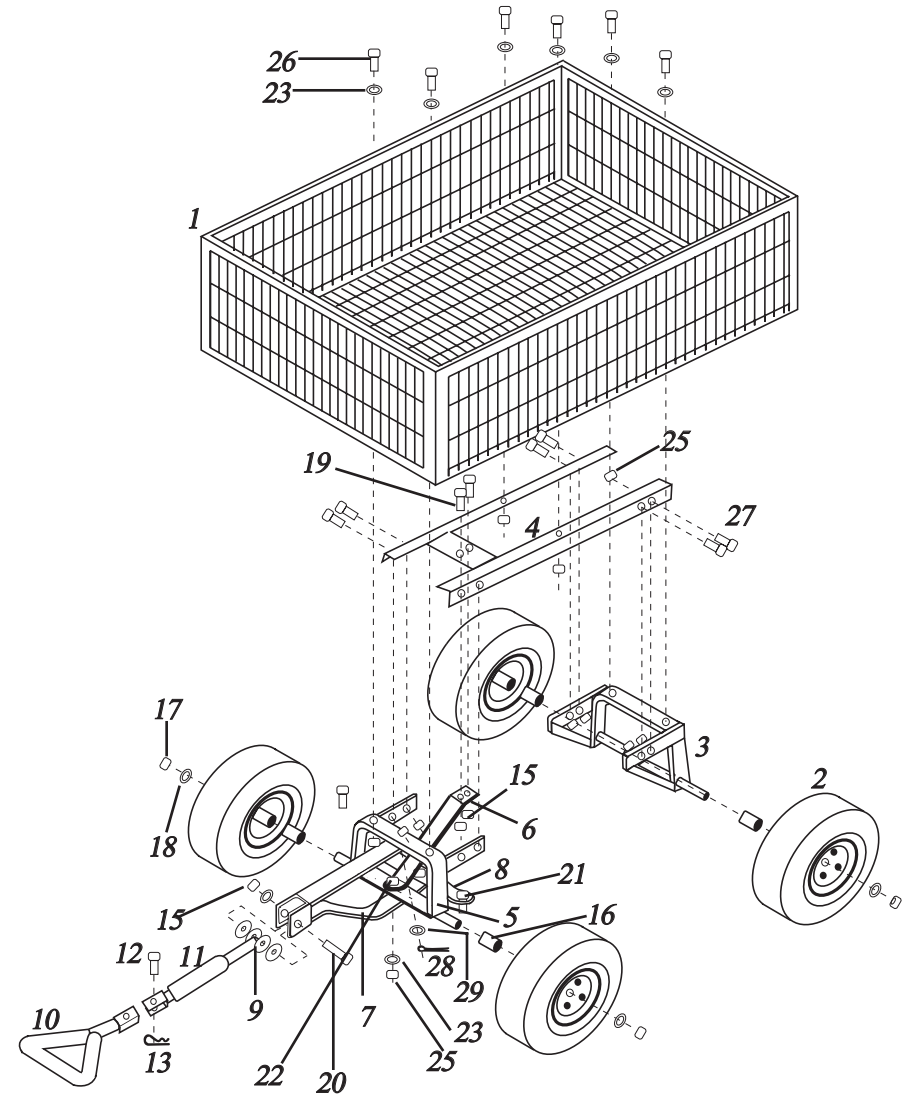
Tools Needed: Socket and/or Wrench in 10mm, 13mm and 19 mm
Flathead screwdriver

Unpack carton and layout all components and hardware on flat work surface.

- 1 Position *Front Axle Support #5*, *Frame Support #4* and *Rear Axle Support #3* upside down on work surface. Line up holes and install *Frame Support Bolts (#27)* and *Nuts (#25)* with *Lock Inserts* as shown in diagram.
- 2 If not already installed, line up *Front Yoke #7* to *Front Axle Support #5* and install *Front Axle Washer* and *Cotter Pin*. Line up hole in *Yoke (#7)*, *Front Support (#5)*, and *Lower Axle Brace* and insert *Long Steering Shoulder Bolt (#22)* as shown in diagram.
- 3 Line up the two holes in the *Axle Brace* to the *Frame Support (#4)* and install *Axle Brace Bolts (#19)* and *Nuts (#15)*.
- 4 Position in place the *Steering Link Connector #8* and install the 3 *Short Steering Shoulder Bolts (#21)* and *Nuts*. After this step, tighten all frame connections.
- 5 Slide *Wheel Spacers (#16)* onto *Axles*, *Wheels*, *Lock Washers* and *Wheel Nuts*. Tighten *Wheel Nuts*. note: DO NOT OVER-TIGHTEN WHEELS
- 6 Turn *Sub Assembly* over onto wheels. Place *Bed* onto *Frame Assembly*. Line up holes in *Bed* to *Frame* and install *Bed Bolts (#26)*, *Washers (#23)*, and *Nuts (#15)* with *Lock Inserts* as shown in diagram.
- 7 Slide *Pull Handle #11* between connection on *Front Yoke #7*. Line up and install *Pull Handle Bolt (#20)*, *Washer (#14)* and *Nut (#15)* as shown in diagram.
- 8 Assembly is complete. The handle can be converted from *Grip* to *Tow hitch* by removing the *Handle Clevis Pin (#12)*. The *Grip* will be removed to expose the drop pin hitch. Clevis pin removed can be used to hitch for towing.

Tips

Lubrication: Periodically apply light machine oil to yoke and steering mechanism for maximum life.



Part List for P48UW Utility Wagon

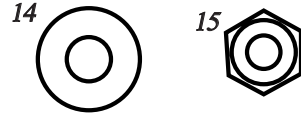
Main Frame Parts

- 1 Bed (1)
- 2 13" Wheels (4)



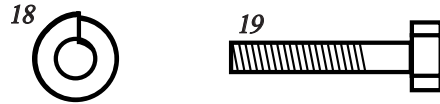
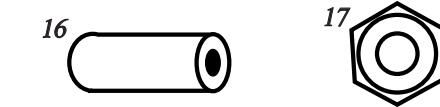
Rear Support Assembly

- 3 Rear Axle Support (1)
- 4 Frame Support (1)



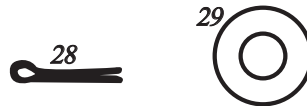
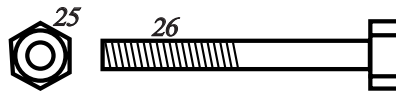
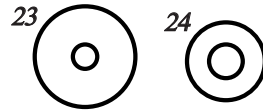
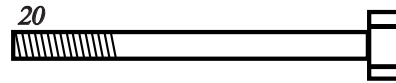
Front Support Assembly

- 5 Front Axle Support (1)
- 6 Center Front Axle Brace (1)
- 7 Yoke (1)
- 8 Steering Link Connector (1)
- 9 Plastic Coupling (1)
- 10 Pull Handle (1)
- 11 Tractor Pull Handle (1)



Assembly Hardware

- 12 Handle Clevis Pin (1)
- 13 Clevis Pin (1)
- 14 Washer 8mm (1)
- 15 Nuts w/ lock Inserts 8mm (9)
- 16 Wheel Spacer Bushings (4)
- 17 Wheel Nuts 12mm (4)
- 18 Wheel Lock Washers 12mm (4)
- 19 Center Front Axle Brace Bolts
8 x 20mm (2) - use with #15
- 20 Pull Handle Bolt
8 x 60mm (1) - use with #14 & #15
- 21 Short Steering Assembly Shoulder Bolt
8 x 15mm (3) - use with #24 & #25
- 22 Long Steering Assembly Shoulder Bolt
8 x 17mm (1) - use with #24 & #25
- 23 Yoke & Cart Bed Washers
8 x 25mm OD (8)
- 24 Washers 6mm (4)
- 25 Nuts w/ Lock Inserts 6mm (12)
- 26 Cart Bed Bolts 8 x 45mm (6)
- 27 Frame Support Bolts 6 x 16mm (8)
- 28 Front Axle Cotter Pin (1)
- 29 Front Axle Washer 10mm (1)



P48UW Utility Wagon

specifications:

Bed Dimension: 30" x 46" x 7 1/2" deep

Wheels: 13" pneumatic wheels

are sealed and lubricated for long life

Load Capacity: 1200 lbs.